

AASA Meeting

Thursday, October 24, 2013



- Local Control Funding Formula (LCFF)
 - Common Core Funding

LCFF is not the Weighted Student Formula

- What it Does

© 2013 School Services of California, Inc.



- The LCFF makes fundamental changes to how we allocate state Proposition 98 revenues to schools
- There are direct parallels with how we have funded schools in the past
 - The LCFF base grants are like revenue limits
 - The LCFF base grant adjustments – class-size reduction (CSR), CTE, supplemental grants, concentration grants – are like categorical programs
- At full implementation, the LCFF will fund every student at the same base rate
 - Over time, most school district and charter school base grant funding will equalize to the same level

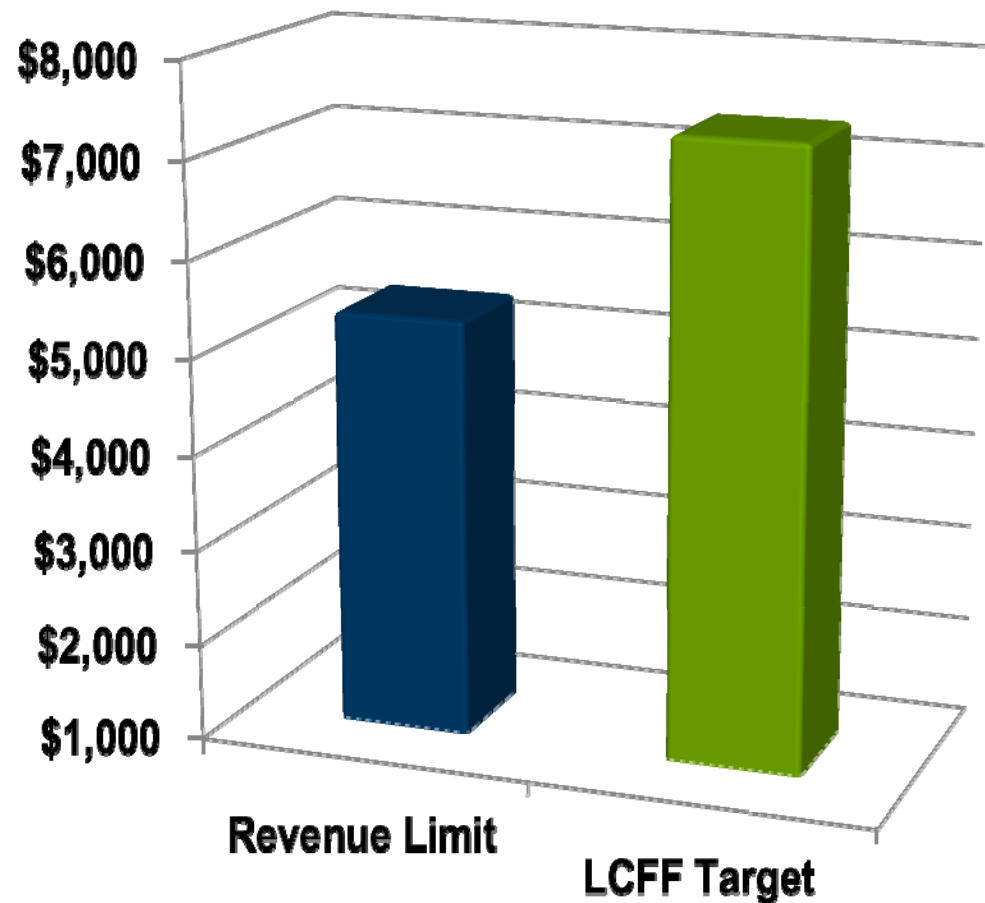
Revenue Limits and LCFF Base Grants

© 2013 School Services of California, Inc.



- The LCFF sets a starting average grant per ADA for 2013-14 of \$7,357, with a plan to bring all base per-pupil funding for most school districts and charter schools to that level, adjusted for inflation, in eight years (2020-21)
- The current deficiated average revenue limit per ADA is \$5,347, \$2,010 below the 2013-14 LCFF target
- Cost to fully fund the base target – approximately \$12 billion

Averages Per ADA

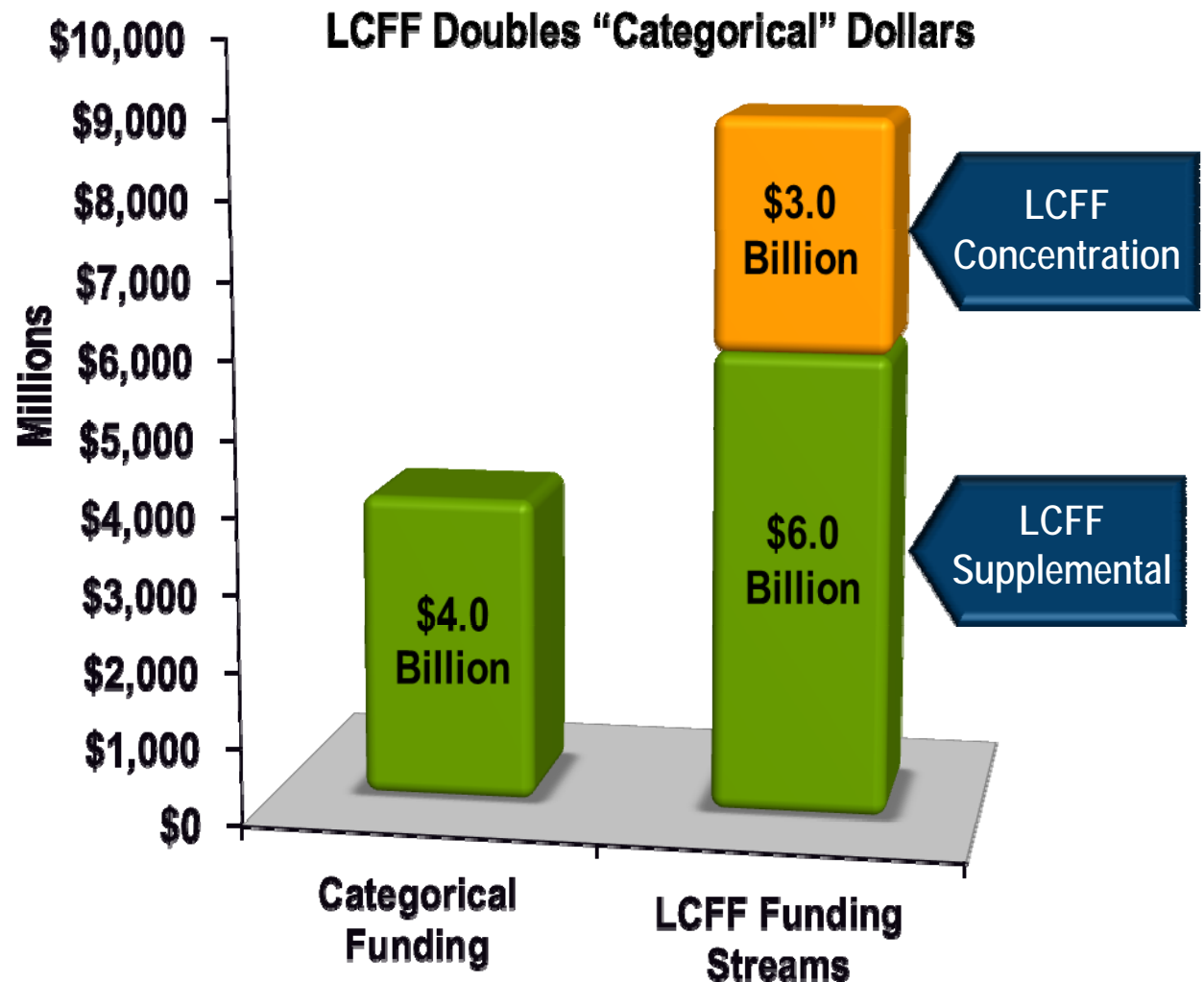


LCFF Categorical Streams

© 2013 School Services of California, Inc.



- The LCFF both dramatically increases the level of funding flowing to school districts in addition to the base grant and dramatically reduces the factors that influence the flow of those dollars
- Weighting factors take the place of separate categorical program appropriations



How are Categorical Funds treated under LCFF?



Retained Programs

Adults in Correctional Facilities
After School Education and Safety
Agricultural Vocational Education
American Indian Education Centers and
Early Childhood Education Program
Assessments
Child Nutrition

Foster Youth Services
Mandates Block Grant
Partnership Academies
Quality Education Improvement Act
Special Education
Specialized Secondary Programs
State Preschool

Eliminated Programs

Advanced Placement Fee Waiver
Alternative Credentialing
California High School Exit Exam Tutoring
California School Age Families
Categorical Programs for New Schools
Certificated Staff Mentoring
Charter School Block Grant
Civic Education
Community-Based English Tutoring
Community Day School (extra hours)
Deferred Maintenance
Economic Impact Aid
Educational Technology

Instructional Materials Block Grant
International Baccalaureate Diploma Program
National Board Certification Incentives
Oral Health Assessments
Physical Education Block Grant
Principal Training
Professional Development Block Grant
Professional Development for Math and English
School and Library Improvement Block Grant
School Safety
School Safety Competitive Grant
Staff Development
Student Councils

Elements of the Formula

© 2013 School Services of California, Inc.



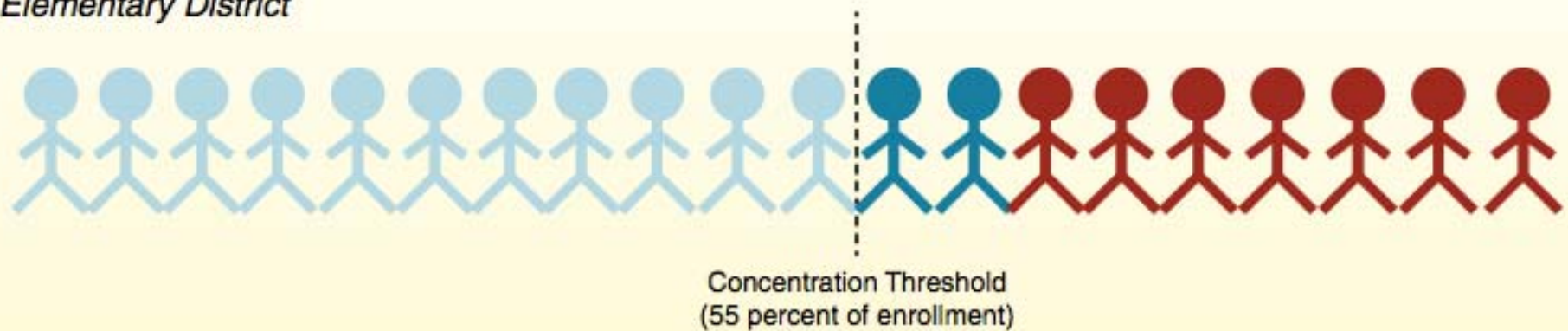
- Additional funding based on the demographics of the school district:
 - English learners
 - Pupils eligible for free and reduced-price meals program
 - Foster youth
- An unduplicated count
 - The number of unduplicated pupils enrolled for each school district and charter school as a percentage of total enrollment
- A three-year rolling average of California Longitudinal Pupil Achievement Data System (CALPADS) reported counts
 - 2013-14 uses one year of data; 2014-15 uses the average of two years of data; 2015-16 and future years use three years of data






Figure 2

Illustration of How LCFF Works

Elementary District



		Funding Each Student Generates				
	Student	Base K-3 Rate	K-3 Adjustment	EL/LI Supplement	EL/LI Concentration	Total
	EL/LI	\$6,845	\$712	\$1,511	—	\$9,068
	EL/LI	\$6,845	\$712	\$1,511	\$3,779	\$12,847
	Non-EL/LI	\$6,845	\$712	—	—	\$7,557

EL/LI = English learner/low-income.

ESUHSD

Common Core Funding- \$4.7 Million



It can be used in only the three following areas:

1. Professional Development 25%

- Eng. Lang Arts
- Literacy Across All Content Areas
- Mathematics
- Staffing

2. Instructional Materials 30%

- ELA
- Literacy
- Math

3. Technology 45%

- Hardware
- Software

1 x money - must be spent in two years!

AASA Meeting
Thursday, October 24, 2013

